

Countersunk head screw with hexagon socket ISO 10642, A2-070 stainless steel, plain

- Due to their head geometry, countersunk head screws have a limited load capacity according to this standard and possibly do not meet tensile or torsional strength requirements.
- The actual mechanical properties of the screw are unchanged and comply with ISO 3506-1
- Depending on the type, these items are supplied with threading almost up to the head
- Countersinks for screw heads in accordance with DIN 7991 and ISO 10642 must comply with DIN 74 shape F

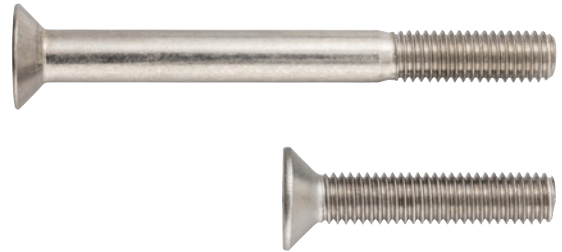
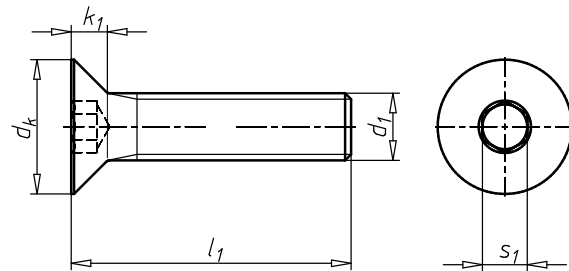


Illustration only



Standards	ISO 10642
Material	Stainless steel A2
Property class	070
Surface	Plain
RoHS-compliant	Yes
Head type	Countersunk head
Drive type	Hexagon socket
Thread type	Metric thread
Thread format	Standard metric thread
Product class	A



Thread type x nominal diameter (d ₁)	Length (l ₁)	Head diameter (d _k)	Head height (k ₁)	Internal drive (s ₁)	Art. no.	P. Qty.
M2.5	6 mm	5.08 mm	1.69 mm	HS1.5	0100 25 6	5000
M2.5	8 mm	5.08 mm	1.69 mm	HS1.5	0100 25 8	1000
M2.5	12 mm	5.08 mm	1.69 mm	HS1.5	0100 25 12	1000
M2.5	18 mm	5.08 mm	1.69 mm	HS1.5	0100 25 18	500
M3	5 mm	5.81 mm	1.86 mm	HS2	0100 3 5	1000
M3	6 mm	5.81 mm	1.86 mm	HS2	0100 3 6	1000
M3	8 mm	5.81 mm	1.86 mm	HS2	0100 3 8	1000
M3	10 mm	5.81 mm	1.86 mm	HS2	0100 3 10	1000
M3	12 mm	5.81 mm	1.86 mm	HS2	0100 3 12	1000
M3	14 mm	5.81 mm	1.86 mm	HS2	0100 3 14	1000
M3	16 mm	5.81 mm	1.86 mm	HS2	0100 3 16	1000
M3	18 mm	5.81 mm	1.86 mm	HS2	0100 3 18	1000
M3	20 mm	5.81 mm	1.86 mm	HS2	0100 3 20	1000
M3	25 mm	5.81 mm	1.86 mm	HS2	0100 3 25	500
M3	30 mm	5.81 mm	1.86 mm	HS2	0100 3 30	500
M3	35 mm	5.81 mm	1.86 mm	HS2	0100 3 35	500
M3	40 mm	5.81 mm	1.86 mm	HS2	0100 3 40	500
M3	45 mm	5.81 mm	1.86 mm	HS2	0100 3 45	500
M3	50 mm	5.81 mm	1.86 mm	HS2	0100 3 50	500
M4	6 mm	7.96 mm	2.48 mm	HS2.5	0100 4 6	1000
M4	8 mm	7.96 mm	2.48 mm	HS2.5	0100 4 8	100
M4	10 mm	7.96 mm	2.48 mm	HS2.5	0100 4 10	100
M4	12 mm	7.96 mm	2.48 mm	HS2.5	0100 4 12	100

Thread type x nominal diameter (d ₁)	Length (l ₁)	Head diameter (d _k)	Head height (k ₁)	Internal drive (s ₁)	Art. no.	P. Qty.
M4	14 mm	7.96 mm	2.48 mm	HS2.5	0100 4 14	100
M4	16 mm	7.96 mm	2.48 mm	HS2.5	0100 4 16	100
M4	18 mm	7.96 mm	2.48 mm	HS2.5	0100 4 18	500
M4	20 mm	7.96 mm	2.48 mm	HS2.5	0100 4 20	100
M4	25 mm	7.96 mm	2.48 mm	HS2.5	0100 4 25	100
M4	30 mm	7.96 mm	2.48 mm	HS2.5	0100 4 30	100
M4	35 mm	7.96 mm	2.48 mm	HS2.5	0100 4 35	500
M4	40 mm	7.96 mm	2.48 mm	HS2.5	0100 4 40	500
M4	45 mm	7.96 mm	2.48 mm	HS2.5	0100 4 45	500
M4	50 mm	7.96 mm	2.48 mm	HS2.5	0100 4 50	500
M4	60 mm	7.96 mm	2.48 mm	HS2.5	0100 4 60	500
M5	6 mm	10.07 mm	3.1 mm	HS3	0100 5 6	500
M5	7 mm	10.07 mm	3.1 mm	HS3	0100 5 7	200
M5	8 mm	10.07 mm	3.1 mm	HS3	0100 5 8	500
M5	10 mm	10.07 mm	3.1 mm	HS3	0100 5 10	100
M5	12 mm	10.07 mm	3.1 mm	HS3	0100 5 12	100
M5	14 mm	10.07 mm	3.1 mm	HS3	0100 5 14	100
M5	16 mm	10.07 mm	3.1 mm	HS3	0100 5 16	100
M5	18 mm	10.07 mm	3.1 mm	HS3	0100 5 18	500
M5	20 mm	10.07 mm	3.1 mm	HS3	0100 5 20	100
M5	22 mm	10.07 mm	3.1 mm	HS3	0100 5 22	500
M5	25 mm	10.07 mm	3.1 mm	HS3	0100 5 25	100
M5	30 mm	10.07 mm	3.1 mm	HS3	0100 5 30	100
M5	35 mm	10.07 mm	3.1 mm	HS3	0100 5 35	100
M5	40 mm	10.07 mm	3.1 mm	HS3	0100 5 40	100
M5	45 mm	10.07 mm	3.1 mm	HS3	0100 5 45	200
M5	50 mm	10.07 mm	3.1 mm	HS3	0100 5 50	200
M5	55 mm	10.07 mm	3.1 mm	HS3	0100 5 55	200
M5	60 mm	10.07 mm	3.1 mm	HS3	0100 5 60	200
M5	65 mm	10.07 mm	3.1 mm	HS3	0100 5 65	200
M5	70 mm	10.07 mm	3.1 mm	HS3	0100 5 70	100
M5	80 mm	10.07 mm	3.1 mm	HS3	0100 5 80	100
M5	90 mm	10.07 mm	3.1 mm	HS3	0100 5 90	200
M5	100 mm	10.07 mm	3.1 mm	HS3	0100 5 100	200
M5	105 mm	10.07 mm	3.1 mm	HS3	0100 5 105	200
M6	8 mm	12.16 mm	3.72 mm	HS4	0100 6 8	200
M6	10 mm	12.16 mm	3.72 mm	HS4	0100 6 10	100/500
M6	12 mm	12.16 mm	3.72 mm	HS4	0100 6 12	100
M6	14 mm	12.16 mm	3.72 mm	HS4	0100 6 14	100/500
M6	16 mm	12.16 mm	3.72 mm	HS4	0100 6 16	100
M6	18 mm	12.16 mm	3.72 mm	HS4	0100 6 18	100
M6	20 mm	12.16 mm	3.72 mm	HS4	0100 6 20	100
M6	22 mm	12.16 mm	3.72 mm	HS4	0100 6 22	100
M6	25 mm	12.16 mm	3.72 mm	HS4	0100 6 25	100
M6	30 mm	12.16 mm	3.72 mm	HS4	0100 6 30	100
M6	35 mm	12.16 mm	3.72 mm	HS4	0100 6 35	100
M6	40 mm	12.16 mm	3.72 mm	HS4	0100 6 40	100
M6	45 mm	12.16 mm	3.72 mm	HS4	0100 6 45	100
M6	50 mm	12.16 mm	3.72 mm	HS4	0100 6 50	100
M6	55 mm	12.16 mm	3.72 mm	HS4	0100 6 55	100
M6	60 mm	12.16 mm	3.72 mm	HS4	0100 6 60	100
M6	65 mm	12.16 mm	3.72 mm	HS4	0100 6 65	100
M6	70 mm	12.16 mm	3.72 mm	HS4	0100 6 70	100

Thread type x nominal diameter (d ₁)	Length (l ₁)	Head diameter (d _k)	Head height (k ₁)	Internal drive (s ₁)	Art. no.	P. Qty.
M6	75 mm	12.16 mm	3.72 mm	HS4	0100 6 75	100
M6	80 mm	12.16 mm	3.72 mm	HS4	0100 6 80	100
M6	90 mm	12.16 mm	3.72 mm	HS4	0100 6 90	100
M6	100 mm	12.16 mm	3.72 mm	HS4	0100 6 100	100
M8	10 mm	16.43 mm	4.96 mm	HS5	0100 8 10	500
M8	12 mm	16.43 mm	4.96 mm	HS5	0100 8 12	100
M8	14 mm	16.43 mm	4.96 mm	HS5	0100 8 14	100
M8	16 mm	16.43 mm	4.96 mm	HS5	0100 8 16	100
M8	18 mm	16.43 mm	4.96 mm	HS5	0100 8 18	100
M8	20 mm	16.43 mm	4.96 mm	HS5	0100 8 20	100/200
M8	25 mm	16.43 mm	4.96 mm	HS5	0100 8 25	100
M8	30 mm	16.43 mm	4.96 mm	HS5	0100 8 30	100
M8	35 mm	16.43 mm	4.96 mm	HS5	0100 8 35	100
M8	40 mm	16.43 mm	4.96 mm	HS5	0100 8 40	100
M8	45 mm	16.43 mm	4.96 mm	HS5	0100 8 45	100
M8	50 mm	16.43 mm	4.96 mm	HS5	0100 8 50	100
M8	55 mm	16.43 mm	4.96 mm	HS5	0100 8 55	100
M8	60 mm	16.43 mm	4.96 mm	HS5	0100 8 60	100
M8	65 mm	16.43 mm	4.96 mm	HS5	0100 8 65	100
M8	70 mm	16.43 mm	4.96 mm	HS5	0100 8 70	100
M8	75 mm	16.43 mm	4.96 mm	HS5	0100 8 8	100
M8	75 mm	16.43 mm	4.96 mm	HS5	0100 8 75	100
M8	80 mm	16.43 mm	4.96 mm	HS5	0100 8 80	100
M8	85 mm	16.43 mm	4.96 mm	HS5	0100 8 85	100
M8	90 mm	16.43 mm	4.96 mm	HS5	0100 8 90	100
M8	100 mm	16.43 mm	4.96 mm	HS5	0100 8 100	100
M8	110 mm	16.43 mm	4.96 mm	HS5	0100 8 110	50
M8	120 mm	16.43 mm	4.96 mm	HS5	0100 8 120	100
M8	130 mm	16.43 mm	4.96 mm	HS5	0100 8 130	50
M8	140 mm	16.43 mm	4.96 mm	HS5	0100 8 140	100
M10	12 mm	20.69 mm	6.2 mm	HS6	0100 10 12	50
M10	16 mm	20.69 mm	6.2 mm	HS6	0100 10 16	100
M10	20 mm	20.69 mm	6.2 mm	HS6	0100 10 20	100
M10	25 mm	20.69 mm	6.2 mm	HS6	0100 10 25	100
M10	30 mm	20.69 mm	6.2 mm	HS6	0100 10 30	100
M10	35 mm	20.69 mm	6.2 mm	HS6	0100 10 35	100
M10	40 mm	20.69 mm	6.2 mm	HS6	0100 10 40	100
M10	45 mm	20.69 mm	6.2 mm	HS6	0100 10 45	100
M10	50 mm	20.69 mm	6.2 mm	HS6	0100 10 50	100
M10	55 mm	20.69 mm	6.2 mm	HS6	0100 10 55	100
M10	60 mm	20.69 mm	6.2 mm	HS6	0100 10 60	100
M10	65 mm	20.69 mm	6.2 mm	HS6	0100 10 65	50
M10	70 mm	20.69 mm	6.2 mm	HS6	0100 10 70	50
M10	75 mm	20.69 mm	6.2 mm	HS6	0100 10 75	100
M10	80 mm	20.69 mm	6.2 mm	HS6	0100 10 80	50
M10	90 mm	20.69 mm	6.2 mm	HS6	0100 10 90	50
M10	100 mm	20.69 mm	6.2 mm	HS6	0100 10 100	50
M10	110 mm	20.69 mm	6.2 mm	HS6	0100 10 110	50
M10	120 mm	20.69 mm	6.2 mm	HS6	0100 10 120	50
M10	130 mm	20.69 mm	6.2 mm	HS6	0100 10 130	50
M10	140 mm	20.69 mm	6.2 mm	HS6	0100 10 140	50
M10	150 mm	20.69 mm	6.2 mm	HS6	0100 10 150	20
M10	160 mm	20.69 mm	6.2 mm	HS6	0100 10 160	1

Thread type x nominal diameter (d ₁)	Length (l ₁)	Head diameter (d _k)	Head height (k ₁)	Internal drive (s ₁)	Art. no.	P. Qty.
M10	180 mm	20.69 mm	6.2 mm	HS6	0100 10 180	1
M12	20 mm	24.81 mm	7.44 mm	HS8	0100 12 20	50
M12	25 mm	24.81 mm	7.44 mm	HS8	0100 12 25	50
M12	30 mm	24.81 mm	7.44 mm	HS8	0100 12 30	50
M12	35 mm	24.81 mm	7.44 mm	HS8	0100 12 35	50
M12	40 mm	24.81 mm	7.44 mm	HS8	0100 12 40	50
M12	45 mm	24.81 mm	7.44 mm	HS8	0100 12 45	50
M12	50 mm	24.81 mm	7.44 mm	HS8	0100 12 50	50
M12	55 mm	24.81 mm	7.44 mm	HS8	0100 12 55	50
M12	60 mm	24.81 mm	7.44 mm	HS8	0100 12 60	50
M12	65 mm	24.81 mm	7.44 mm	HS8	0100 12 65	50
M12	70 mm	24.81 mm	7.44 mm	HS8	0100 12 70	50
M12	75 mm	24.81 mm	7.44 mm	HS8	0100 12 75	50
M12	80 mm	24.81 mm	7.44 mm	HS8	0100 12 80	50
M12	90 mm	24.81 mm	7.44 mm	HS8	0100 12 90	50
M12	100 mm	24.81 mm	7.44 mm	HS8	0100 12 100	50
M12	160 mm	24.81 mm	7.44 mm	HS8	0100 12 160	50
M12	180 mm	24.81 mm	7.44 mm	HS8	0100 12 180	10
M14	50 mm	28.31 mm	8.4 mm	HS10	0100 14 50	25
M16	25 mm	30.61 mm	8.8 mm	HS10	0100 16 25	25
M16	30 mm	30.61 mm	8.8 mm	HS10	0100 16 30	50
M16	35 mm	30.61 mm	8.8 mm	HS10	0100 16 35	25
M16	40 mm	30.61 mm	8.8 mm	HS10	0100 16 40	25/50
M16	45 mm	30.61 mm	8.8 mm	HS10	0100 16 45	25
M16	50 mm	30.61 mm	8.8 mm	HS10	0100 16 50	50
M16	60 mm	30.61 mm	8.8 mm	HS10	0100 16 60	25
M16	65 mm	30.61 mm	8.8 mm	HS10	0100 16 65	25
M16	70 mm	30.61 mm	8.8 mm	HS10	0100 16 70	25
M16	75 mm	30.61 mm	8.8 mm	HS10	0100 16 75	25
M16	80 mm	30.61 mm	8.8 mm	HS10	0100 16 80	25
M16	90 mm	30.61 mm	8.8 mm	HS10	0100 16 90	25
M16	100 mm	30.61 mm	8.8 mm	HS10	0100 16 100	25
M16	110 mm	30.61 mm	8.8 mm	HS10	0100 16 110	25
M16	120 mm	30.61 mm	8.8 mm	HS10	0100 16 120	25
M16	130 mm	30.61 mm	8.8 mm	HS10	0100 16 130	25
M16	140 mm	30.61 mm	8.8 mm	HS10	0100 16 140	25
M16	150 mm	30.61 mm	8.8 mm	HS10	0100 16 150	25
M20	25 mm	36.75 mm	10.16 mm	HS12	0100 20 25	25
M20	35 mm	36.75 mm	10.16 mm	HS12	0100 20 35	50
M20	40 mm	36.75 mm	10.16 mm	HS12	0100 20 40	50
M20	45 mm	36.75 mm	10.16 mm	HS12	0100 20 45	25
M20	50 mm	36.75 mm	10.16 mm	HS12	0100 20 50	25
M20	55 mm	36.75 mm	10.16 mm	HS12	0100 20 55	25
M20	60 mm	36.75 mm	10.16 mm	HS12	0100 20 60	25
M20	70 mm	36.75 mm	10.16 mm	HS12	0100 20 70	25
M20	90 mm	36.75 mm	10.16 mm	HS12	0100 20 90	25
M20	100 mm	36.75 mm	10.16 mm	HS12	0100 20 100	25
M20	130 mm	36.75 mm	10.16 mm	HS12	0100 20 130	25
M20	140 mm	36.75 mm	10.16 mm	HS12	0100 20 140	25

Notice

DIN 7991 has been withdrawn and replaced by ISO 10642. There is some limited similarity (some head heights and head diameters have been changed | nominal \varnothing M18, M22, M24 are omitted | Stainless steels removed | strength classes 10.9 and 12.9 added).

These screws can only be subjected to limited loads due to their head geometry, see DIN EN ISO 3506-1