

Screw with flattened half round head with collar and hexagon socket ISO 7380-2, A2-070 stainless steel, plain

Standards	ISO 7380-2
Material	Stainless steel A2
Property class	070
Surface	Plain
Drive type	Hexagon socket
Thread type	Metric thread
Thread format	Standard metric thread
RoHS-compliant	Yes

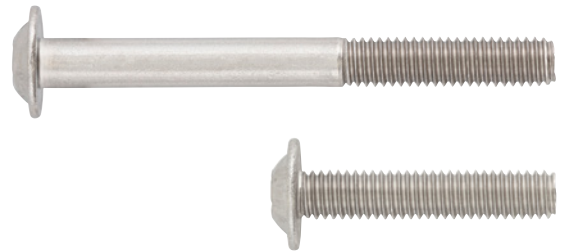
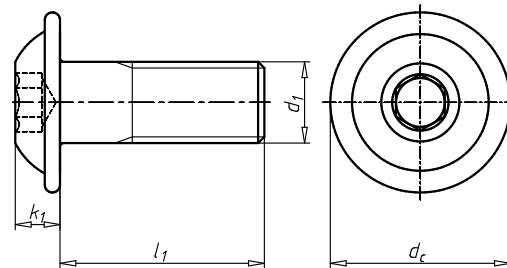


Illustration only



Thread type x nominal diameter (d ₁)	Length (l ₁)	Head diameter (d _c)	Head height (k ₁)	Internal drive	Art. no.	P. Qty.
M3	4 mm	6.9 mm	1.65 mm	HS2	0098 023 4	200
M3	5 mm	6.9 mm	1.65 mm	HS2	0098 023 5	200
M3	6 mm	6.9 mm	1.65 mm	HS2	0098 023 6	100
M3	8 mm	6.9 mm	1.65 mm	HS2	0098 023 8	100
M3	10 mm	6.9 mm	1.65 mm	HS2	0098 023 10	100
M3	12 mm	6.9 mm	1.65 mm	HS2	0098 023 12	100
M3	16 mm	6.9 mm	1.65 mm	HS2	0098 023 16	100
M3	20 mm	6.9 mm	1.65 mm	HS2	0098 023 20	100
M3	25 mm	6.9 mm	1.65 mm	HS2	0098 023 25	1000
M3	35 mm	6.9 mm	1.65 mm	HS2	0098 023 35	1000
M4	5 mm	9.4 mm	2.2 mm	HS2.5	0098 024 5	200
M4	6 mm	9.4 mm	2.2 mm	HS2.5	0098 024 6	100
M4	8 mm	9.4 mm	2.2 mm	HS2.5	0098 024 8	100
M4	10 mm	9.4 mm	2.2 mm	HS2.5	0098 024 10	100
M4	12 mm	9.4 mm	2.2 mm	HS2.5	0098 024 12	100
M4	16 mm	9.4 mm	2.2 mm	HS2.5	0098 024 16	100
M4	18 mm	9.4 mm	2.2 mm	HS2.5	0098 024 18	500
M4	20 mm	9.4 mm	2.2 mm	HS2.5	0098 024 20	100
M4	22 mm	9.4 mm	2.2 mm	HS2.5	0098 024 22	500
M4	25 mm	9.4 mm	2.2 mm	HS2.5	0098 024 25	100
M4	30 mm	9.4 mm	2.2 mm	HS2.5	0098 024 30	100
M4	35 mm	9.4 mm	2.2 mm	HS2.5	0098 024 35	100
M4	40 mm	9.4 mm	2.2 mm	HS2.5	0098 024 40	100
M4	50 mm	9.4 mm	2.2 mm	HS2.5	0098 024 50	500

Thread type x nominal diameter (d ₁)	Length (l ₁)	Head diameter (d ₂)	Head height (k ₁)	Internal drive	Art. no.	P. Qty.
M5	6 mm	11.8 mm	2.75 mm	HS3	0098 025 6	100
M5	8 mm	11.8 mm	2.75 mm	HS3	0098 025 8	100
M5	10 mm	11.8 mm	2.75 mm	HS3	0098 025 10	100
M5	12 mm	11.8 mm	2.75 mm	HS3	0098 025 12	100
M5	16 mm	11.8 mm	2.75 mm	HS3	0098 025 16	100
M5	20 mm	11.8 mm	2.75 mm	HS3	0098 025 20	100
M5	25 mm	11.8 mm	2.75 mm	HS3	0098 025 25	100
M5	28 mm	11.8 mm	2.75 mm	HS3	0098 025 28	500
M5	30 mm	11.8 mm	2.75 mm	HS3	0098 025 30	100
M5	35 mm	11.8 mm	2.75 mm	HS3	0098 025 35	100
M5	40 mm	11.8 mm	2.75 mm	HS3	0098 025 40	100
M5	45 mm	11.8 mm	2.75 mm	HS3	0098 025 45	100
M5	50 mm	11.8 mm	2.75 mm	HS3	0098 025 50	100
M6	6 mm	13.6 mm	3.3 mm	HS4	0098 026 06	100
M6	8 mm	13.6 mm	3.3 mm	HS4	0098 026 8	100
M6	10 mm	13.6 mm	3.3 mm	HS4	0098 026 10	100
M6	12 mm	13.6 mm	3.3 mm	HS4	0098 026 12	100
M6	14 mm	13.6 mm	3.3 mm	HS4	0098 026 14	100
M6	16 mm	13.6 mm	3.3 mm	HS4	0098 026 16	100
M6	18 mm	13.6 mm	3.3 mm	HS4	0098 026 18	500
M6	20 mm	13.6 mm	3.3 mm	HS4	0098 026 20	100
M6	25 mm	13.6 mm	3.3 mm	HS4	0098 026 25	100
M6	30 mm	13.6 mm	3.3 mm	HS4	0098 026 30	100
M6	35 mm	13.6 mm	3.3 mm	HS4	0098 026 35	100
M6	40 mm	13.6 mm	3.3 mm	HS4	0098 026 40	100
M6	45 mm	13.6 mm	3.3 mm	HS4	0098 026 45	50/500
M6	50 mm	13.6 mm	3.3 mm	HS4	0098 026 50	50
M6	55 mm	13.6 mm	3.3 mm	HS4	0098 026 55	50
M6	60 mm	13.6 mm	3.3 mm	HS4	0098 026 60	50
M6	70 mm	13.6 mm	3.3 mm	HS4	0098 026 70	50
M8	10 mm	17.8 mm	4.4 mm	HS5	0098 028 10	100
M8	12 mm	17.8 mm	4.4 mm	HS5	0098 028 12	100
M8	14 mm	17.8 mm	4.4 mm	HS5	0098 028 14	100
M8	16 mm	17.8 mm	4.4 mm	HS5	0098 028 16	100
M8	20 mm	17.8 mm	4.4 mm	HS5	0098 028 20	100
M8	25 mm	17.8 mm	4.4 mm	HS5	0098 028 25	100
M8	30 mm	17.8 mm	4.4 mm	HS5	0098 028 30	100
M8	35 mm	17.8 mm	4.4 mm	HS5	0098 028 35	100
M8	40 mm	17.8 mm	4.4 mm	HS5	0098 028 40	100
M8	45 mm	17.8 mm	4.4 mm	HS5	0098 028 45	50
M8	50 mm	17.8 mm	4.4 mm	HS5	0098 028 50	50
M8	55 mm	17.8 mm	4.4 mm	HS5	0098 028 55	500
M8	60 mm	17.8 mm	4.4 mm	HS5	0098 028 60	50
M8	80 mm	17.8 mm	4.4 mm	HS5	0098 028 80	50/250
M8	85 mm	17.8 mm	4.4 mm	HS5	0098 028 85	500
M8	90 mm	17.8 mm	4.4 mm	HS5	0098 028 90	100
M10	12 mm	21.9 mm	5.5 mm	HS6	0098 021 012	100
M10	16 mm	21.9 mm	5.5 mm	HS6	0098 021 016	100
M10	20 mm	21.9 mm	5.5 mm	HS6	0098 021 020	100
M10	25 mm	21.9 mm	5.5 mm	HS6	0098 021 025	100
M10	30 mm	21.9 mm	5.5 mm	HS6	0098 021 030	100
M10	35 mm	21.9 mm	5.5 mm	HS6	0098 021 035	100
M10	40 mm	21.9 mm	5.5 mm	HS6	0098 021 040	100

Thread type x nominal diameter (d ₁)	Length (l ₁)	Head diameter (d ₂)	Head height (k ₁)	Internal drive	Art. no.	P. Qty.
M10	45 mm	21.9 mm	5.5 mm	HS6	0098 021 045	100
M10	70 mm	21.9 mm	5.5 mm	HS6	0098 021 070	50
M12	16 mm	26 mm	6.6 mm	HS8	0098 021 216	50
M12	20 mm	26 mm	6.6 mm	HS8	0098 021 220	50
M12	25 mm	26 mm	6.6 mm	HS8	0098 021 225	100
M12	30 mm	26 mm	6.6 mm	HS8	0098 021 230	50
M12	35 mm	26 mm	6.6 mm	HS8	0098 021 235	100
M12	40 mm	26 mm	6.6 mm	HS8	0098 021 240	100
M12	45 mm	26 mm	6.6 mm	HS8	0098 021 245	100
M12	60 mm	26 mm	6.6 mm	HS8	0098 021 260	200
M12	90 mm	26 mm	6.6 mm	HS8	0098 021 290	50

Notice

These screws can only be subjected to limited loads due to their head geometry, see DIN EN ISO 3506-1

Related products	Art. no.
Screw, flattened half round head, with collar and hexagon socket assortment 1,000 pieces	5964 009 801